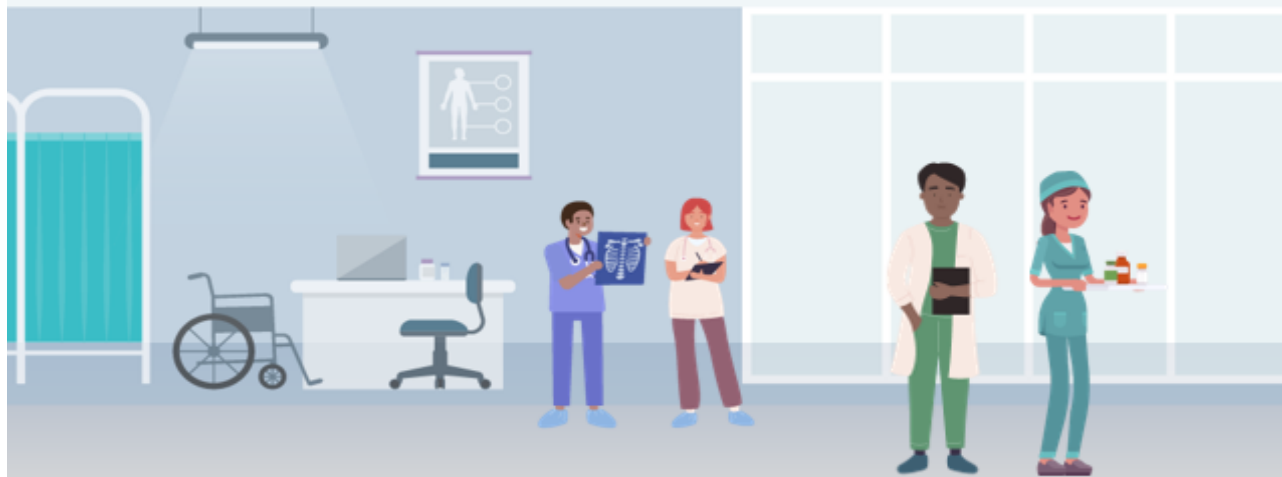




<https://www.bls.gov/careeroutlook/2021/article/projected-openings-college-degree.htm#Computer%20and%20engineering>

Table 4. Healthcare

Occupations projected to have the most openings each year, on average, 2020–30



Occupation	Occupational openings, projected 2020–30 annual average	Median annual wage, 2020	Degree typically required for entry
Registered nurses	194,500	\$75,330	Bachelor's
Nurse practitioners	26,000	111,680	Master's
Clinical laboratory technologists and technicians	25,900	54,180	Bachelor's
Physicians and surgeons	22,700	>=208,000	Doctoral or professional
Radiologic technologists and technicians	17,400	61,900	Associate's
Physical therapist assistants	16,400	59,770	Associate's
Physical therapists	15,600	91,010	Doctoral or professional
Dental hygienists	15,600	77,090	Associate's
Speech-language pathologists	15,200	80,480	Master's
Physician assistants	12,200	115,390	Master's

Note: An internship or residency is typically required for physicians and surgeons and speech-language pathologists.

Source: U.S. Bureau of Labor Statistics, Office of Occupational Statistics and Employment Projections.

Table 4 has relatively few bachelor's-level occupations. [Dental hygienists](#), [physical therapist assistants](#), and [radiologic technologists](#) typically need an associate's degree. [Nurse practitioners](#), [speech-language pathologists](#), and [physician assistants](#) typically need a master's degree, and [physicians and surgeons](#) and [physical therapists](#) typically need a doctoral or professional degree. Most workers in these occupations must be licensed, and some also must complete an internship or residency.