



North Orange Continuing Education 2021

Services Supporting Inclusion in Postsecondary Education

2 Broad Inclusive Pathways



What are your goals for school and work?

We will help you identify the services to support your goals!

Education	Employment
DSS Classes – Foundational Skills	DSS Classes – Foundational Skills
Bus Mobility	Bus Mobility
Credit & Noncredit Instruction	Employability Skills
Accommodations	Employment Preparation
Specialized Labs & Tutoring	Job Development
Educational Coaching	Job, Living Independently



Anaheim
Campus



Cypress Center
**located on
Cypress College's Campus*



Wilshire Center
**next to Fullerton College*

Student Demographics



Total (unduplicated)	1051
Acquired Brain Injury	7
Attention Deficit Disorder	11
Autism Spectrum Disorder	291
Intellectual Disability	378
Hearing Impairment	18
Learning Disability	62
Mobility Impairment	14
Other Disability	87
Mental Health Disability	115
Visual Impairment	68

Noncredit Vocational Certificates

**Administrative Professional
Braille Transcribing
Business Information Worker I
Early Childhood Education
Electrical Technology
Funeral Service Assistant
Management
Medical Assistant
Pharmacy Technician**

**Introductory
Computer
Classes**

**High School
Diploma
Program**

Many Credit Options
**Individual Classes
Vocational Certificates
AA Degrees**

**Automotive
Math, English
Business
History
Culinary Arts
Science, Technology
Psychology, Sociology
Much more...**

Services Supporting Inclusion



Bus training to increase independence

Supports for taking inclusive classes:

- **Outside of Disability Support Services classes**
- **NOCE, Cypress College, or Fullerton College**
- **Mainstream or general class**



Want to learn how to safely ride the city bus?

1:1 and Group Training

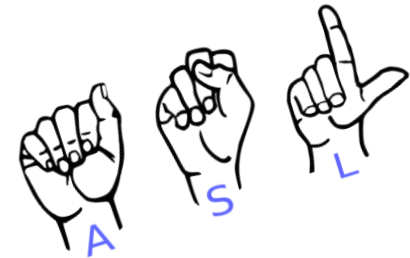
***Currently adapted to online format**

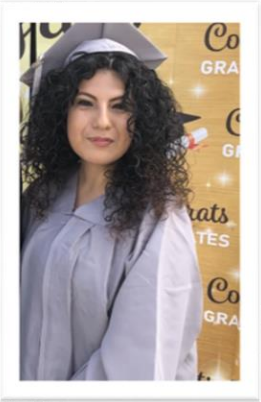


Counseling & Accommodations



Counseling Appointments	5,262
Annual Reviews	353
Accommodation Letters	450
Intakes	323





College to Career Program

- Educational Coaching
- Specialized Instructional Lab
- Counseling & referral (e.g. credit, CTE)
- Intellectual Disability or Autism Spectrum Disorder
- 18 years of age or older
- Eligible for Department of Rehabilitation (DOR)
- Desire to take inclusive classes
- Goal: Independent employment



IVES Program

- **Tailored Day Services**
- **1:1 Educational Coaching**
- **Inclusive classes**
- **Up to 7 hours per week**
- **Not supervision**
- **Regional Center vendor**
- **Agreed upon schedule with coach**
- **Demonstrate progress towards goals**



Equity Coaching



Equity Coaching Program (pilot)

- 1:1 Educational Coaching
- Inclusive classes
- Up to 7 hours per week
- Not supervision
- Not Regional Center eligible
- Agreed upon schedule with coach
- Demonstrate progress towards goals



ARISE Program

- Sensory friendly room
- Neurodiversity
- Social & executive functioning skills
- Fidgets, relaxing furniture, quiet spaces
- Mindfulness & wellness workshops
- Social groups & student led activities
- Open office hours, 1:1 meetings with ARISE staff
- Study sessions in zoom





ARISE 19/20	Students Served	Academic Program	Visits To Lab	Reason For Visit	Visits To Lab
Unduplicated	493	Credit	21	Academic	546
Duplicated	3,670	CTE	489	Mental Health	510
On-campus	2,245	DSS	2,759	Personal	335
Online	1,425	ESL	14	Self-Regulation	784
Groups (dup)	1,539	HSDP	13	Social Skills	864
		WISE	32		

(Note: Table includes 2019/20 data plus Summer 2020)



2019/20 Inclusion Services	C2C	IVES	Equity	Total
Students w/ Ed Coach	54	23	8	85
Specialized Lab	27	N/A	N/A	40
Inclusive Classes	43	66	9	118
Classes Passed	45	59	5	109
Not Passed	3	4	2	9
Repeated	1	3	2	6
Total Hours of Coaching	965	1,279	232	2,476

DSS Accomplishments



Outcomes	2018/19	2019/20	Difference
DSS Certificates Earned	163	278	115
Graduates from DSS Classes	57	55	- 2
Inclusive Classes (# of Students)	77	85	8
Inclusive Certificates, Diplomas, Degrees	43	29	-14
Workforce Preparation (Students)	127	130	3
Employed (Students)	55	48	-7

General Goal: Increase 5%

Planned New DSS Curriculum & CTE



Retail Customer Service

Digital Marketing

Food Service Industry

Child Care

Animal Care

Academic and Vocational Success

Personal Health and Wellness

Personal Finance Living Independently

Relationship Safety

Self-Advocacy

Social and Communication Skills



Adam Gottdank, DSS Director, agottdank@noce.edu
April Fante, Program Manager, afante@noce.edu
Lorri Guy, WAIII/Workforce, lguy@noce.edu

DSS COUNSELORS

Kristina De La Cerda (Cypress), kdelacerda@noce.edu
Christina Lakeman (Cypress), clakeman@noce.edu
Rosie Navarro (Wilshire), rnavarro@noce.edu
Michelle Patrick-Norng (Anaheim), mpatrick@noce.edu
Casey Sousa (Anaheim), csousa@noce.edu
Kim Thompson (C2C/Anaheim), kthompson@noce.edu

(714) 484-7057

**Please contact us for more information
or to schedule an appointment.**

