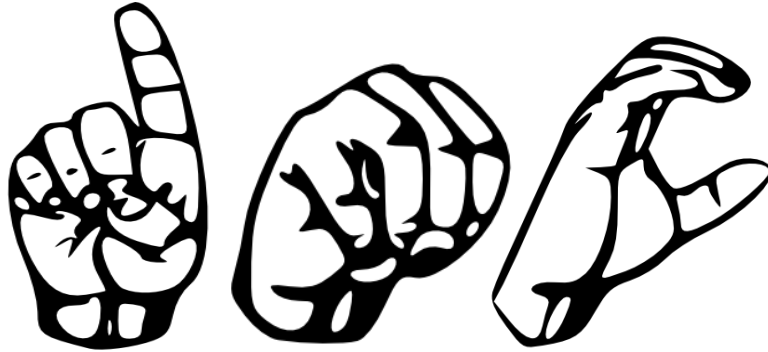


Did You Know That Approximately 200,000 Deaf Individuals Live in Orange and Los Angeles Counties?



Like other residents, they work, play, shop, worship, and conduct business transactions. To communicate effectively with deaf persons, schools, businesses, hospitals, and other community services need access to certified and qualified sign language interpreters.

The Dayle McIntosh Center (DMC), has offered a sign language interpreter referral service for more than 35 years.

DMC interpreters are available 24 hours a day, seven days a week. Modes of communication facilitated include American Sign Language (ASL), tactile, trilingual, and oral interpreting services.

Use of sign language interpreters ensures compliance with the Americans with Disabilities Act (ADA).

To request can interpreter call:

(949) 460-7784

Monday through Friday 8:00am to 5:00pm

Or fax requests to:

(949) 334-2302

For after hours emergencies please call:

(800) 422-7444



DAYLE MCINTOSH
CENTER

Email: asl@daylemc.org

www.daylemc.org